



Spare parts for:

Food processing equipment



Suitable for:

ATOMA



This catalogue is automatically generated.
Therefore, the sequence of the items might
not be always shown at best.

Updates will be issued in case of additions
and/or amendments.

*Suitable **universal spare parts** may not be included*

Rel. 2013-11251847





Suitable for:

ATOMA



Suitable for:

Accident prevention devices-protections

9014155 BLACK ARM HANDLE \varnothing 32.5 mm
 thread \varnothing 10 mm - clamp \varnothing 64 mm
 for Slicer (RGV) DOLLYVS350/S - PROFVS350/F
 for Slicer (SIRMAN) - Series AGATA
 Series AUTOMATICA - Series GEMMA - Series LEONARDO
 Series MIRRA - Series OPALE - Series SELCE
 Series VAS - Series VCO - Series VCS



ATOMA

9716013 POLYCARBONATE CARRIAGE PROTECTION
 max.overall dimensions 155x210 mm
 distance between holes 85 mm
 for Slicer (FIA-BOSTON) ECO300



ATOMA

9716083 POLYCARBONATE CARRIAGE PROTECTION
 max.overall dimensions 280x280 mm
 distance between mounting holes 210 mm
 for Slicer (FIA-BOSTON) 350 - 370MAX



ATOMA LF-5022759

ATOMA

Belts

9062037 MULTIGRIP BELT TB2 430 H16 7 GROOVES
 for Slicer (ATOMA)
 for Slicer (OMS) 250V - 275V
 for Slicer (SIRMAN) GALILEO350AUTOCE
 GALILEO350CE - GALILEO350STDCE - GALILEO370CE
 GALILEO370STDCE - GALILEO385CE
 GALILEO385STDCE - VAS250CE - VAS275CE
 VCO250CE - VCO275CE - 250V - 275V



ATOMA

9003507 V BELT 6x330 mm Y352
 for Slicer (ABO) 220 - 250 - 275 - 300G - 300V
 for Slicer (AGHETTO UNIVERSAL) 275G
 for Slicer (ATOMA)
 for Slicer (LEO) 275 - 300
 for Slicer (OBERWERK)
 for Slicer (OMEGA) AG300
 for Slicer (SWINFORD)



ATOMA

Blade protectors for slicers

9706001 BLADE COVER ATOMA EUR 350
 external \varnothing 417 mm - internal \varnothing for blade 280 mm
 internal thread \varnothing 7 mm



ATOMA



Blades for meat slicer

9006509 ST. STEEL BLADE \varnothing 220-25.4-4-180 MOD.C

B = external \varnothing 220 mm
 D = central hole \varnothing 25.4 mm
 C = blade internal \varnothing 180 mm
 4 fastening screws
 100CR6 forged stainless steel



ATOMA

9006526 ST. STEEL BLADE \varnothing 300-40-3-254-240 MOD.F

B = external diameter 300 mm
 D = central hole diameter 40 mm.
 C = blade internal diameter 254 mm.
 A = rise element diameter 240 mm
 3 fastening screws
 100CR6 forged stainless steel



ATOMA

9006528 ST. STEEL BLADE \varnothing 300-57-4-254 MOD.C

B = external \varnothing 300 mm
 D = central hole \varnothing 57 mm
 C = blade internal \varnothing 254 mm
 4 fastening screws
 100CR6 forged stainless steel
 for Slicer (OMAS) C30E - TGI330



ATOMA

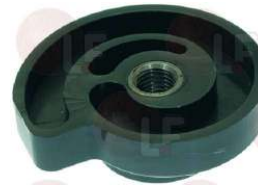
Eccentrics

9005016 PLASTIC ECCENTRIC ATOMA \varnothing 70 mm
 internal hole \varnothing 12 mm - groove 10 mm
 with lateral ear
 for Slicer (ATOMA)
 for Slicer (FIA-BOSTON)



ATOMA

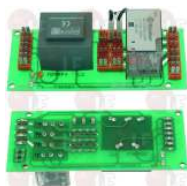
9707022 PLASTIC ECCENTRIC ATOMA \varnothing 70 mm
 internal hole \varnothing 12 mm - grooving 10 mm
 for Slicer (ATOMA)
 for Slicer (FIA-BOSTON)



ATOMA

Electronic printed-circuit boards

9390049 3-PHASE ELECTRON.CIRCUIT BOARD 230/400V
 external dimensions 137x58 mm
 for Slicer (FIA-BOSTON)



ATOMA



Suitable for:

ATOMA



Suitable for:

Emeries for blades

9013213 RIMMED GRINDERS WITH HUB 50-6-8

A = external \varnothing 50 mm
 B = hole \varnothing 6 mm
 H = height 8 mm
 FINE GRAIN
 for Slicer (ALA 2000) F300E
 for Slicer (FAC) F300E - F300I
 for Slicer (HOBART) 2301
 for Slicer (OMAS) A300 - A31E - A310 - GL - TN
 for Slicer (RHENINGHAUS-TECMAL) HF350 - MONDIAL280



ATOMA

9013221 RIMMED GRINDERS WITH HUB 50-9.6-10

A = external \varnothing 50 mm
 B = hole \varnothing 9.6 mm
 H = height 10 mm
 FINE GRAIN
 giant type
 for Slicer (FIA-BOSTON) BM - H350 - MAX350



ATOMA

9013138 RIMMED GRINDERS 50-10-10

A = external \varnothing 50 mm
 B = hole \varnothing 10 mm
 H = height 10 mm
 FINE GRAIN
 for Slicer (BERKEL) 114
 for Slicer (ITALIANA MACCHI) G370E



ATOMA

9013021 RIMMED GRINDERS 51-9.6-12

A = external \varnothing 51 mm
 B = hole \varnothing 9.6 mm
 H = height 12 mm
 COARSE GRAIN
 for Slicer (FIA-BOSTON) BM - H - MAX350



ATOMA

Gears

9005504 29-TOOTH GEAR IN BAKELITE

external \varnothing 59 mm
 internal \varnothing 35 mm
 height 20 mm
 feather 3.5x3.5 mm
 for Slicer (ATOMA)



ATOMA

9005505 30-TOOTH GEAR IN BAKELITE

external \varnothing 59 mm
 internal \varnothing 35 mm
 height 20 mm
 5 fittings
 gear protection \varnothing 10 mm
 for Slicer (ATOMA)



ATOMA



Suitable for:

ATOMA



Suitable for:

Knobs

9007451 BLACK TIMER KNOB HOLE \varnothing 12 mm
no shaft
knob \varnothing 65 mm
cover \varnothing 72 mm
for Slicer (ATOMA)



ATOMA

9007452 BLACK TIMER KNOB HOLE \varnothing 12 mm
without pin
knob \varnothing 73 mm
mounting frame \varnothing 72 mm
for Slicer (BOSTON)



ATOMA

Sharpeners

9701003 BLADE SHARPENER ATOMA 350-370
with cover
for Slicer (ATOMA) ECO300



ATOMA

Tie rods for blade cover

9714021 BLADE COV.TIE ROD SHAFT 235 mm PITCH M10
micro support \varnothing 15x14 mm
for Slicer (ATOMA) EUR350



ATOMA